

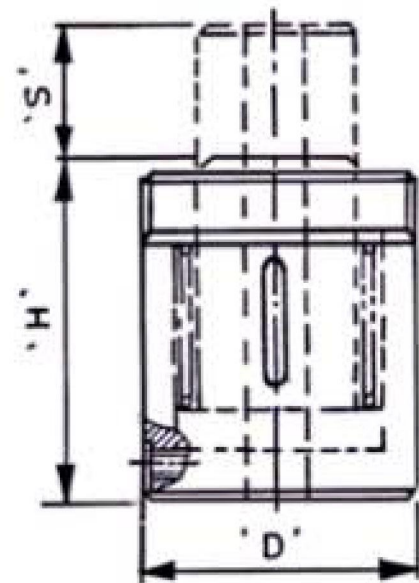


## **SERIES :LDHC:LIGHT WEIGHT , DOUBLE ACTING CYLINDER WITH CENTRE HOLE**

**Applications :** Ideally suited for pulling and pushing operations in areas such as positioning of cables, ropes and supporting bars, form work for arch supports and handling operation in civil engineering works. These cylinders with suitable attachments can also be used for extraction and press fitting of bearings, bushes, and shafts.

### **Features:**

- Hollow ram design make these cylinders versatile in pulling operations apart from their usual pushing characteristic. A bar or rope passing through and attached suitably to the ram pushes or pulls the load connected at the other end when the ram moves under pressure.
- Heat treated alloy steel body.
- Ram return by oil pressure.
- Cylinder base provided with fixing holes.
- Threading on cylinder body, surface treatment on cylinder can be provided on request.
- Working pressure 700 bar.
- Cylinders tested to ANSI standards.



MODEL	CAPACITY tons	STROKE 'S' mm	CLOSED HT 'H' Mm	OUTER DIA 'D' mm	APPROX WEIGHT kg
LDHC10/75	10	75	184	75	5.1
LDHC10/150	10	150	260	75	6.9
LDHC20/75	20	75	185	110	10.9
LDHC20/150	20	150	306	110	17.8
LDHC30/75	30	75	235	122	16.0
LDHC30/150	30	150	310	122	20.0
LDHC60/75	60	75	235	170	31.0
LDHC60/150	60	150	310	170	40.0
LDHC100/75	100	75	295	225	70.0